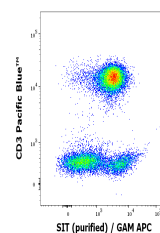


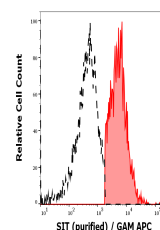
## Product Datasheet

### SIT antibody (orb44488)

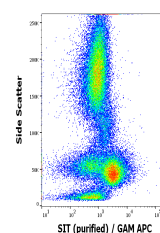
<b>Description</b>	Mouse Monoclonal to SIT.
<b>Reactivity</b>	Human
<b>Conjugation</b>	Unconjugated
<b>Tested Applications</b>	FC, IP, WB
<b>Immunogen</b>	Bacterially produced recombinant intracellular fragment of human SIT.
<b>Target</b>	SIT
<b>Preservatives</b>	Phosphate buffered saline (PBS), pH 7.4, 15 mM sodium azide
<b>Concentration</b>	1 mg/ml
<b>Storage</b>	Store at 2-8°C. Do not freeze.
<b>Note</b>	For research use only
<b>Application notes</b>	Flow cytometry: Intracellular staining. Western blotting: SIT migrates as an approximately 40 kDa protein that is reduced to approximately 20 kDa by endoglycosidase treatment.
<b>Isotype</b>	Mouse IgG1
<b>Clonality</b>	Monoclonal
<b>Purity</b>	Purified by protein-A affinity chromatography.
<b>Uniprot ID</b>	<a href="#">Q9Y3P8</a>
<b>Entrez</b>	<a href="#">27240</a>
<b>Dilution Range</b>	Flow cytometry: Recommended dilution: 1-5 µg/ml, intracellular staining. Western blotting: Recommended dilution: 1-2 µg/ml, reducing conditions.
<b>Expiration Date</b>	12 months from date of receipt.



Flow  
cytometry  
multicolor  
intracellular ...



Separation of  
human CD3  
negative SIT  
pos...



Flow  
cytometry  
intracellular  
staining pa...