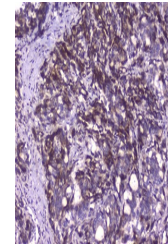


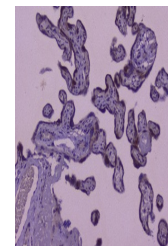
Product Datasheet

CIC Antibody (orb443162)

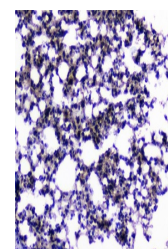
Description	CIC Antibody
Species/Host	Rabbit
Reactivity	Human, Mouse, Rat
Conjugation	Unconjugated
Tested Applications	ELISA, IHC
Immunogen	E. coli-derived human CIC recombinant protein (Position: E1433-Q1527).
Form/Appearance	Lyophilized
Concentration	Adding 0.2 ml of distilled water will yield a concentration of 500 µg/ml.
Storage	Store at -20°C for one year from date of receipt. After reconstitution, at 4°C for one month. It can also be aliquotted and stored frozen at -20°C for six months. Avoid repeated freeze-thaw cycles.
Note	For research use only
Application notes	Add 0.2ml of distilled water will yield a concentration of 500ug/ml.
Isotype	Rabbit IgG
Clonality	Polyclonal
Uniprot ID	Q96RK0
Dilution Range	Immunohistochemistry (Paraffin-embedded Section), 0.5-1µg/ml Direct ELISA, 0.1-0.5µg/ml
Expiration Date	12 months from date of receipt.



IHC analysis of CIC using anti-CIC antib...



IHC analysis of CIC using anti-CIC antib...



IHC analysis of CIC using anti-CIC antib...