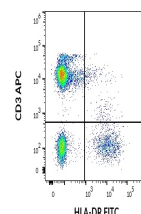


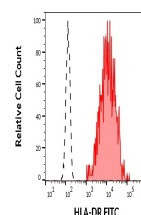
Product Datasheet

HLA-DR antibody (FITC) (orb44043)

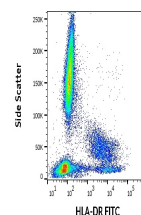
| | |
|----------------------------|---|
| Description | Mouse Monoclonal to HLA-DR. |
| Reactivity | Human |
| Conjugation | FITC |
| Tested Applications | FC |
| Immunogen | thymocyte membrane |
| Target | HLA-DR |
| Preservatives | Stabilizing phosphate buffered saline (PBS), pH 7.4, 15 mM sodium azide |
| Storage | Store at 2-8°C. Protect from prolonged exposure to light. Do not freeze. |
| Note | For research use only |
| Application notes | Flow cytometry: The reagent is designed for analysis of human blood cells using 20 µl reagent / 100 µl of whole blood or 10 ⁶ cells in a suspension. The content of a vial (2 ml) is sufficient for 100 tests. |
| Isotype | Mouse IgG1 |
| Clonality | Monoclonal |
| Purity | Purified antibody is conjugated with fluorescein isothiocyanate (FITC) under optimum conditions and unconjugated antibody and free fluorochrome are removed by size-exclusion chromatography. |
| Dilution Range | Flow cytometry: The reagent is designed for analysis of human blood cells using 20 µl reagent / 100 µl of whole blood or 10 ⁶ cells in a suspension. The content of a vial (2 ml) is sufficient for 100 tests. |
| Expiration Date | 12 months from date of receipt. |



Flow cytometry multicolor surface staini...



Separation of human HLA-DR positive CD3 ...



Flow cytometry surface staining pattern ...