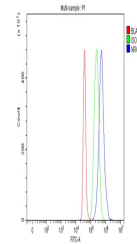


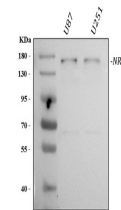
Product Datasheet

Neurexin 1/NRXN1 Antibody (orb413059)

Description	Neurexin 1/NRXN1 Antibody
Species/Host	Rabbit
Reactivity	Human
Conjugation	Unconjugated
Tested Applications	ELISA, FC, WB
Immunogen	E. coli-derived human Neurexin 1 recombinant protein (Position: D141-E294).
Form/Appearance	Lyophilized
Concentration	Adding 0.2 ml of distilled water will yield a concentration of 500 µg/ml.
Storage	Store at -20°C for one year from date of receipt. After reconstitution, at 4°C for one month. It can also be aliquotted and stored frozen at -20°C for six months. Avoid repeated freeze-thaw cycles.
Note	For research use only
Application notes	Add 0.2ml of distilled water will yield a concentration of 500ug/ml.
Isotype	Rabbit IgG
Clonality	Polyclonal
MW	160-170 kDa
Uniprot ID	P58400
Expiration Date	12 months from date of receipt.



Flow Cytometry analysis of SH-SY5Y cells...



WB analysis of Neurexin 1/NRXN1 using an...