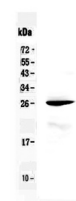


Product Datasheet

RND1 Antibody (orb402567)

Description	RND1 Antibody
Species/Host	Rabbit
Reactivity	Human, Mouse
Conjugation	Unconjugated
Tested Applications	WB
Immunogen	E. coli-derived human RND1 recombinant protein (Position: K105-C229). Human RND1 shares 95.2% amino acid (aa) sequence identity with mouse RND1.
Form/Appearance	Lyophilized
Concentration	Adding 0.2 ml of distilled water will yield a concentration of 500 µg/ml.
Storage	Store at -20°C for one year from date of receipt. After reconstitution, at 4°C for one month. It can also be aliquotted and stored frozen at -20°C for six months. Avoid repeated freeze-thaw cycles.
Note	For research use only
Application notes	Tested Species: In-house tested species with positive results. Predicted Species: Species predicted to be fit for the product based on sequence similarities. Other applications have not been tested. Optimal dilutions should be determined by end users. . Add 0.2ml of distilled water will yield a concentration of 500ug/ml.
Isotype	Rabbit IgG
Clonality	Polyclonal
MW	26056 MW
Uniprot ID	Q92730
Dilution Range	Western blot, 0.1-0.5µg/ml, Mouse, Human
Expiration Date	12 months from date of receipt.



WB analysis of RND1 using anti-RND1 anti...