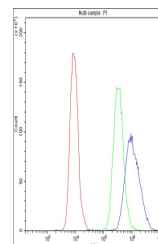


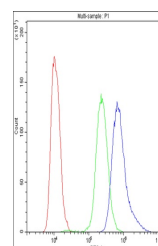
Product Datasheet

NFATC4 Antibody (orb402503)

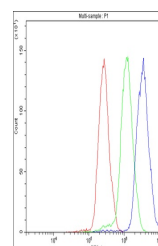
| | |
|----------------------------|---|
| Description | NFATC4 Antibody |
| Species/Host | Rabbit |
| Reactivity | Human, Mouse, Rat |
| Conjugation | Unconjugated |
| Tested Applications | ELISA, FC, ICC, IHC, WB |
| Immunogen | E. coli-derived human NFATC4 recombinant protein (Position: Q413-D522). |
| Form/Appearance | Lyophilized |
| Concentration | Adding 0.2 ml of distilled water will yield a concentration of 500 µg/ml. |
| Storage | Store at -20°C for one year from date of receipt. After reconstitution, at 4°C for one month. It can also be aliquotted and stored frozen at -20°C for six months. Avoid repeated freeze-thaw cycles. |
| Note | For research use only |
| Application notes | Tested Species: In-house tested species with positive results. Other applications have not been tested. Optimal dilutions should be determined by end users. Add 0.2ml of distilled water will yield a concentration of 500ug/ml. |
| Isotype | Rabbit IgG |
| Clonality | Polyclonal |
| MW | 95120 kDa |
| Uniprot ID | Q14934 |
| Dilution Range | Western blot, 0.1-0.5µg/ml Immunohistochemistry (Frozen Section), 0.5-1µg/ml Immunocytochemistry, 0.5-1µg/ml Flow Cytometry, 1-3µg/1x10 ⁶ cells Direct ELISA, 0.1-0.5µg/ml |
| Expiration Date | 12 months from date of receipt. |



Flow Cytometry analysis of U2OS cells US...



Flow Cytometry analysis of SiHa cells us...



Flow Cytometry analysis of A431 cells US...