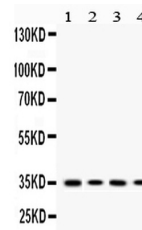


Product Datasheet

MC1 Receptor/MC1R Antibody (orb389493)

| | |
|----------------------------|-------------------------------------------------------------------------------------------------------------------------------------------------------------------------------------------------------------------------------------|
| Description | MC1 Receptor/MC1R Antibody |
| Species/Host | Rabbit |
| Reactivity | Human, Mouse, Rat |
| Conjugation | Unconjugated |
| Tested Applications | WB |
| Immunogen | A synthetic peptide corresponding to a sequence at the C-terminus of human MC1 Receptor (290-317aa NAIIDPLIYAFHSQELRRTLKEVLTCSW). |
| Form/Appearance | Lyophilized |
| Concentration | Adding 0.2 ml of distilled water will yield a concentration of 500 µg/ml. |
| Storage | Store at -20°C for one year from date of receipt. After reconstitution, at 4°C for one month. It can also be aliquotted and stored frozen at -20°C for six months. Avoid repeated freeze-thaw cycles. |
| Note | For research use only |
| Application notes | Tested Species: In-house tested species with positive results. Other applications have not been tested. Optimal dilutions should be determined by end users. . Add 0.2ml of distilled water will yield a concentration of 500ug/ml. |
| Isotype | Rabbit IgG |
| Clonality | Polyclonal |
| MW | 34706 MW |
| Uniprot ID | Q01726 |
| Dilution Range | Western blot, 0.1-0.5µg/ml, Human, Mouse, Rat |
| Expiration Date | 12 months from date of receipt. |



WB analysis of MC1 using anti-MC1 antibo...