

Product Datasheet

Fibrinogen gamma chain/FGG Antibody (orb389406)

Description

Fibrinogen gamma chain/FGG Antibody

Species/Host

Rabbit

Reactivity

Human, Mouse, Rat

Conjugation

Unconjugated

Tested Applications

FC, ICC, IHC, IHC-Fr, WB

Immunogen

A synthetic peptide corresponding to a sequence at the N-terminus of human FGG (133-163aa IRYLQEIYNSNNQKIVNLKEKVAQLEAQCQE), different from the related mouse sequence by two amino acids, and from the related rat sequence by five amino acids.

Form/Appearance

Lyophilized

Concentration

Adding 0.2 ml of distilled water will yield a concentration of 500 µg/ml.

Storage

Store at -20°C for one year from date of receipt. After reconstitution, at 4°C for one month. It can also be aliquotted and stored frozen at -20°C for six months. Avoid repeated freeze-thaw cycles.

Note

For research use only

Application notes

Tested Species: In-house tested species with positive results. By Heat: Boiling the paraffin sections in 10mM citrate buffer, pH6.0, for 20mins is required for the staining of formalin/paraffin sections. Other applications have not been tested. Optimal dilutions should be determined by end users. Add 0.2ml of distilled water will yield a concentration of 500ug/ml.

Isotype

Rabbit IgG

Clonality

Polyclonal

MW

51512 MW

Uniprot ID

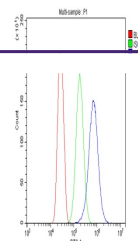
[P02679](#)

Dilution Range

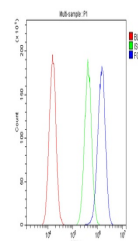
Western blot, 0.1-0.5µg/ml, Human, Mouse, Rat Immunohistochemistry (Paraffin-embedded Section), 0.5-1µg/ml, Human, By Heat Immunohistochemistry (Frozen Section), 0.5-1µg/ml, Human Immunocytochemistry, 0.5-1µg/ml, Human Flow Cytometry, 1-3µg/1x10⁶ cells, Human

Expiration Date

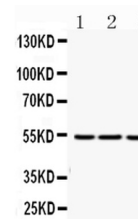
12 months from date of receipt.



Flow Cytometry analysis of SiHa cells us...



Flow Cytometry analysis of A549 cells us...



WB analysis of FGG using anti-FGG antibo...