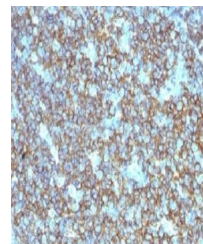


Product Datasheet

CD20 Antibody (orb385986)

Description	CD20 is a non-Ig differentiation antigen of B-cells and its expression is restricted to normal and n...
Species/Host	Rabbit
Reactivity	Human
Conjugation	Unconjugated
Tested Applications	IHC-P
Immunogen	Recombinant human CD20 protein was used as the immunogen for this CD20 antibody.
Preservatives	0.2 mg/ml in 1X PBS with 0.1 mg/ml rAlbumin (US sourced) and 0.05% sodium azide
Storage	CD20 antibody with azide can be stored at 2-8°C. The azide-free format should be aliquoted and stored at -20°C or colder.
Note	For research use only
Application notes	Titering of the CD20 antibody may be required for optimal performance.
Formula	0.2 mg/ml in 1X PBS with 0.1 mg/ml BSA (US sourced) and 0.05% sodium azide
Isotype	Rabbit IgG
Clonality	Polyclonal
Purity	Protein A affinity chromatography
Uniprot ID	P11836
Hazard Information	This CD20 antibody is available for research use only.
Dilution Range	Immunohistochemistry (FFPE): 0.5-1ug/ml for 30 min at RT
Expiration Date	12 months from date of receipt.



Immunohistochemical staining of human to...