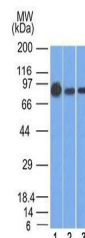


Product Datasheet

Beta Catenin Antibody (orb385954)

| | |
|----------------------------|--|
| Description | The protein encoded by this gene is part of a complex of proteins that constitute adherens junctions... |
| Species/Host | Mouse |
| Reactivity | Human |
| Conjugation | Unconjugated |
| Tested Applications | FACS, IF, WB |
| Immunogen | Chicken b-Catenin was used as the immunogen for the b-Catenin antibody. |
| Preservatives | 0.2 mg/ml in 1X PBS with 0.1 mg/ml rAlbumin (US sourced) and 0.05% sodium azide |
| Storage | Store the b-Catenin antibody at 2-8°C (with azide) or aliquot and store at -20°C or colder (without azide). |
| Note | For research use only |
| Application notes | Titration of the b-Catenin antibody may be required due to differences in protocols and secondary/substrate sensitivity. |
| Formula | 0.2 mg/ml in 1X PBS with 0.1 mg/ml BSA (US sourced) and 0.05% sodium azide |
| Isotype | Mouse IgG1, kappa |
| Clonality | Monoclonal |
| Purity | Protein G affinity chromatography |
| Uniprot ID | P35222 |
| Hazard Information | This b-Catenin antibody is available for research use only. |
| Dilution Range | Flow cytometry: 0.5-1ug/million cells, Immunofluorescence: 1-2ug/ml, Western blot: 0.5-1ug/ml |
| Expiration Date | 12 months from date of receipt. |



Western blot analysis of human A431 (lane...