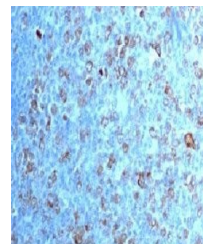


Product Datasheet

CDK1 Antibody (orb385911)

Description	Cyclin-Dependent Kinase 1 is a member of the Ser/Thr protein kinase family. This protein is a cataly...
Species/Host	Mouse
Reactivity	Human
Conjugation	Unconjugated
Tested Applications	IHC-P, WB
Immunogen	Recombinant human protein was used as the immunogen for the CDK1 antibody.
Preservatives	0.2 mg/ml in 1X PBS with 0.1 mg/ml rAlbumin (US sourced) and 0.05% sodium azide
Storage	Store the CDK1 antibody at 2-8°C (with azide) or aliquot and store at -20°C or colder (without azide).
Note	For research use only
Application notes	Titration of the CDK1 antibody may be required for optimal performance.
Formula	0.2 mg/ml in 1X PBS with 0.1 mg/ml BSA (US sourced) and 0.05% sodium azide
Isotype	Mouse IgG2a, kappa
Clonality	Monoclonal
Purity	Protein G affinity chromatography
Uniprot ID	P06493
Hazard Information	This CDK1 antibody is available for research use only.
Dilution Range	Western blot: 1-2ug/ml, Immunohistochemistry (FFPE): 2-4ug/ml for 30 min at RT
Expiration Date	12 months from date of receipt.



Immunohistochemical staining of Human to...