

Product Datasheet

CEA Antibody / Carcinoembryonic Antigen (orb385826)

Description

CEA is synthesized during development in the



amounts in i...

Species/Host

Mouse

Reactivity

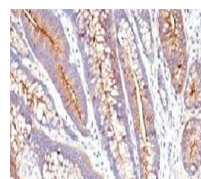
Human

Conjugation

Unconjugated

Tested

IHC-P

Applications


Immunohistochemical
staining of Human
Co...

Immunogen

Human full-length recombinant protein was used as the immunogen for this CEA antibody.

Preservatives

0.2 mg/ml in 1X PBS with 0.1 mg/ml rAlbumin (US sourced) and 0.05% sodium azide

Storage

Store the CEA antibody at 2-8°C (with azide) or aliquot and store at -20°C or colder (without azide).

Note

For research use only

Application notes

The concentration stated for each application is a general starting point. Variations in protocols, secondaries and substrates may require the CEA antibody to be titrated up or down for optimal performance.1. Staining of formalin-fixed tissues requires boiling tissue sections in 10mM Citrate Buffer, pH 6.0, for 10-20 min followed by cooling at RT for 20 minutes.2. The prediluted format is supplied in a dropper bottle and is optimized for use in IHC. After epitope retrieval step (if required), drip mAb solution onto the tissue section and incubate at RT for 30 min.

Formula

0.2 mg/ml in 1X PBS with 0.1 mg/ml BSA (US sourced) and 0.05% sodium azide

Isotype

Mouse IgG2a, kappa

Clonality

Monoclonal

Purity

Protein G affinity chromatography

Uniprot ID

P06731

Hazard
Information

This CEA antibody is available for research use only.

Dilution Range

Immunohistochemistry (FFPE): 0.5-1ug/ml for 30 min at RT (1),Prediluted IHC only format: incubate for 30 min at RT (2)