

## **Product Datasheet**

### **PML Protein Antibody (orb381087)**

## Description

PML Protein Antibody

130KD –

### Species/Host

Rabbit

### Reactivity

Mouse

### Conjugation

Unconjugated

### Tested

IHC, WB

### Applications

### Immunogen

A synthetic peptide corresponding to a sequence at the N-terminus of mouse PML Protein (140-177aa LADFWCFECEQLICSKCFEAHQWYLKHEARPLADLRDN), different from the related human sequence by six amino acids.

### Form/Appearance

Lyophilized

### Concentration

Adding 0.2 ml of distilled water will yield a concentration of 500 µg/ml.

### Storage

Store at -20°C for one year from date of receipt. After reconstitution, at 4°C for one month. It can also be aliquotted and stored frozen at -20°C for six months. Avoid repeated freeze-thaw cycles.

### Note

For research use only

### Application notes

Tested Species: In-house tested species with positive results.  
By Heat: Boiling the paraffin sections in 10mM citrate buffer, pH6.0, for 20mins is required for the staining of formalin/paraffin sections. Other applications have not been tested. Optimal dilutions should be determined by end users. Add 0.2ml of distilled water will yield a concentration of 500ug/ml.

### Isotype

Rabbit IgG

### Clonality

Polyclonal

### MW

98242 MW

### Uniprot ID

[Q60953](#)

### Dilution Range

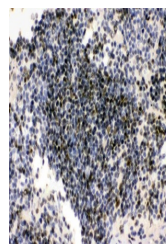
Immunohistochemistry (Paraffin-embedded Section), 0.5-1µg/ml, Mouse, By Heat Western blot, 0.1-0.5µg/ml, Mouse

### Expiration Date

12 months from date of receipt.



WB analysis of PML Protein using anti-PM...



IHC analysis of PML Protein using anti-P...