

## Product Datasheet

### NFIA Antibody (orb381082)

## Description

NFIA Antibody

### Species/Host

Rabbit

### Reactivity

Human, Mouse, Rat

### Conjugation

Unconjugated

### Tested Applications

FC, ICC, IHC, WB

### Immunogen

A synthetic peptide corresponding to a sequence in the middle region of human NFIA (180-224aa AYFVHAADSSQSESPSQPSDADIKDQPENGHLGFQDSFVTSG VFS), different from the related mouse sequence by one amino acid, and identical to the related rat sequence.

### Form/Appearance

Lyophilized

### Concentration

Adding 0.2 ml of distilled water will yield a concentration of 500 µg/ml.

### Storage

Store at -20°C for one year from date of receipt. After reconstitution, at 4°C for one month. It can also be aliquotted and stored frozen at -20°C for six months. Avoid repeated freeze-thaw cycles.

### Note

For research use only

### Application notes

Tested Species: In-house tested species with positive results. By Heat: Boiling the paraffin sections in 10mM citrate buffer, pH6.0, for 20mins is required for the staining of formalin/paraffin sections. Other applications have not been tested. Optimal dilutions should be determined by end users. Add 0.2ml of distilled water will yield a concentration of 500µg/ml.

### Isotype

Rabbit IgG

### Clonality

Polyclonal

### MW

55944 MW

### Uniprot ID

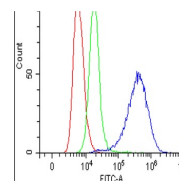
[Q12857](#)

### Dilution Range

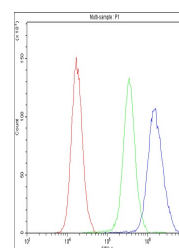
Immunohistochemistry (Paraffin-embedded Section), 0.5-1µg/ml, Human, Mouse, Rat, By Heat Western blot, 0.1-0.5µg/ml, Human, Mouse Immunohistochemistry (Frozen Section), 0.5-1µg/ml, Human Immunocytochemistry, 0.5-1µg/ml, Human Flow Cytometry, 1-3µg/1x10<sup>6</sup> cells, Human

### Expiration Date

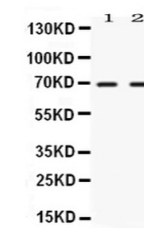
12 months from date of receipt.



Flow Cytometry analysis of K562 cells us...



Flow Cytometry analysis of SiHa cells us...



WB analysis of NFIA using anti-NFIA anti...