

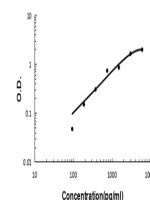
Product Datasheet

CXCL16 Antibody (orb381056)

Description	CXCL16 Antibody
Species/Host	Rabbit
Reactivity	Human
Conjugation	Unconjugated
Tested Applications	ELISA, WB
Immunogen	E. coli-derived human CXCL16 recombinant protein (Position: N30-A196). Human CXCL16 shares 47% and 45.7% amino acid (aa) sequence identity with mouse and rat CXCL16, respectively.
Form/Appearance	Lyophilized
Concentration	Adding 0.2 ml of distilled water will yield a concentration of 500 µg/ml.
Storage	Store at -20°C for one year from date of receipt. After reconstitution, at 4°C for one month. It can also be aliquotted and stored frozen at -20°C for six months. Avoid repeated freeze-thaw cycles.
Note	For research use only
Application notes	Tested Species: In-house tested species with positive results. Other applications have not been tested. Optimal dilutions should be determined by end users. . Add 0.2ml of distilled water will yield a concentration of 500ug/ml.
Isotype	Rabbit IgG
Clonality	Polyclonal
MW	27579 MW
Uniprot ID	Q9H2A7
Dilution Range	Western blot, 0.1-0.5µg/ml, Human ELISA(Cap) , 1-5µg/ml, Human, -
Expiration Date	12 months from date of receipt.



WB analysis of CXCL16 using anti-CXCL16 ...



Sandwich ELISA - Recombinant human cxcl1...