

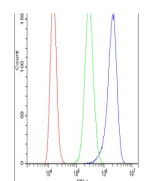
Product Datasheet

ARHGEF1 Antibody (orb381047)

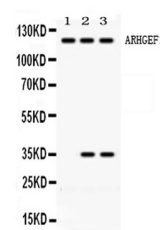
Description

ARHGEF1 Antibody

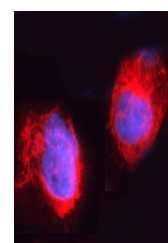
| | |
|----------------------------|-------------------------------------------------------------------------------------------------------------------------------------------------------------------------------------------------------------------------------------------------------------------------------------------------------------------------------------------------------------------------------------------------------------------------------------------------------------------------------|
| Species/Host | Rabbit |
| Reactivity | Human, Mouse, Rat |
| Conjugation | Unconjugated |
| Tested Applications | FC, ICC, IF, IHC, WB |
| Immunogen | A synthetic peptide corresponding to a sequence at the N-terminus of human ARHGEF1 (41-71aa EQNSQFQSLEQVKRRPAHLMALLQHVALQFE), different from the related mouse and rat sequences by one amino acid. |
| Form/Appearance | Lyophilized |
| Concentration | Adding 0.2 ml of distilled water will yield a concentration of 500 µg/ml. |
| Storage | Store at -20°C for one year from date of receipt. After reconstitution, at 4°C for one month. It can also be aliquotted and stored frozen at -20°C for six months. Avoid repeated freeze-thaw cycles. |
| Note | For research use only |
| Application notes | Tested Species: In-house tested species with positive results. Predicted Species: Species predicted to be fit for the product based on sequence similarities. By Heat: Boiling the paraffin sections in 10mM citrate buffer, pH6.0, for 20mins is required for the staining of formalin/paraffin sections. Other applications have not been tested. Optimal dilutions should be determined by end users. Add 0.2ml of distilled water will yield a concentration of 500ug/ml. |
| Isotype | Rabbit IgG |
| Clonality | Polyclonal |
| MW | 102435 MW |
| Uniprot ID | Q92888 |
| Dilution Range | Western blot, 0.1-0.5µg/ml, Human, Rat Immunohistochemistry (Paraffin-embedded Section), 0.5-1µg/ml, Mouse, Rat, Human, By Heat Immunocytochemistry/Immunofluorescence, 2µg/ml, Human Flow Cytometry, 1-3µg/1x10 ⁶ cells, Human |
| Expiration Date | 12 months from date of receipt. |



Flow Cytometry analysis of A431 cells us...



WB analysis of ARHGEF1 using anti-ARHGEF...



IF analysis of ARHGEF1 using anti-ARHGEF...