

Product Datasheet

ALDH1B1 Antibody (orb381039)

Description

ALDH1B1 Antibody

Species/Host

Rabbit

Reactivity

Human, Monkey, Mouse, Rat

Conjugation

Unconjugated

Tested Applications

FC, ICC, IF, IHC, WB

Immunogen

A synthetic peptide corresponding to a sequence at the N-terminus of human ALDH1B1 (116-156aa RYVLASLETLDNGKPFQESYALDLDEVIKVYRYFAGWADK W), different from the related mouse sequence by one amino acid, and from the related rat sequence by two amino acids.

Form/Appearance

Lyophilized

Concentration

Adding 0.2 ml of distilled water will yield a concentration of 500 µg/ml.

Storage

Store at -20°C for one year from date of receipt. After reconstitution, at 4°C for one month. It can also be aliquotted and stored frozen at -20°C for six months. Avoid repeated freeze-thaw cycles.

Note

For research use only

Application notes

Tested Species: In-house tested species with positive results. Other applications have not been tested. Optimal dilutions should be determined by end users. Add 0.2ml of distilled water will yield a concentration of 500ug/ml.

Isotype

Rabbit IgG

Clonality

Polyclonal

MW

57206 MW

Uniprot ID

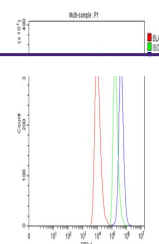
[P30837](#)

Dilution Range

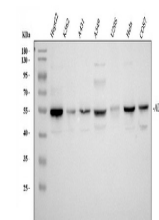
Western blot, 0.1-0.5µg/ml, Human, Monkey, Mouse, Rat
Immunohistochemistry (Paraffin-embedded Section), 2-5µg/ml, Human, Mouse, Rat, By Heat
Immunocytochemistry/Immunofluorescence, 5µg/ml, Human
Flow Cytometry, 1-3µg/1x10⁶ cells, Human

Expiration Date

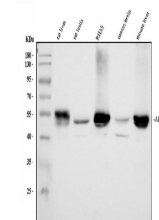
12 months from date of receipt.



Flow Cytometry analysis of HEL cells using anti-ALDH1B1 antibody.



WB analysis of ALDH1B1 using anti-ALDH1B1 antibody.



WB analysis of ALDH1B1 using anti-ALDH1B1 antibody.