

## Product Datasheet

### Alcohol Dehydrogenase/ADH1A Antibody (orb381031)

## Description

Alcohol Dehydrogenase/ADH1A Antibody

### Species/Host

Rabbit

### Reactivity

Human, Mouse, Rat

### Conjugation

Unconjugated

### Tested Applications

FC, ICC, IF, IHC, WB

### Immunogen

E. coli-derived human ADH1A recombinant protein (Position: K213-F375). Human ADH1A shares 87.1% and 82.8% amino acid (aa) sequence identity with mouse and rat ADH1A, respectively.

### Form/Appearance

Lyophilized

### Concentration

Adding 0.2 ml of distilled water will yield a concentration of 500 µg/ml.

### Storage

Store at -20°C for one year from date of receipt. After reconstitution, at 4°C for one month. It can also be aliquotted and stored frozen at -20°C for six months. Avoid repeated freeze-thaw cycles.

### Note

For research use only

### Application notes

Tested Species: In-house tested species with positive results. By Heat: Boiling the paraffin sections in 10mM citrate buffer, pH6.0, for 20mins is required for the staining of formalin/paraffin sections. Other applications have not been tested. Optimal dilutions should be determined by end users. . Add 0.2ml of distilled water will yield a concentration of 500ug/ml.

### Isotype

Rabbit IgG

### Clonality

Polyclonal

### MW

39859 MW

### Uniprot ID

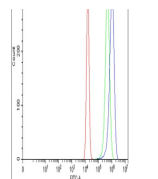
**P07327**

### Dilution Range

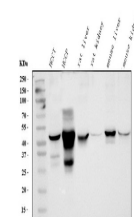
Western blot, 0.1-0.5µg/ml, Human, Mouse, Rat  
Immunohistochemistry (Paraffin-embedded Section), 2-5µg/ml, Human, Mouse, Rat, By Heat  
Immunocytochemistry/Immunofluorescence, 5µg/ml, Human Flow Cytometry, 1-3µg/1x10<sup>6</sup> cells, Human

### Expiration Date

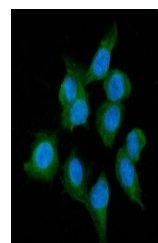
12 months from date of receipt.



Flow Cytometry analysis of U2OS cells us...



WB analysis of ADH1A using anti-ADH1A an...



IF analysis of ADH1A using anti-ADH1A an...