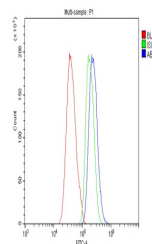


## Product Datasheet

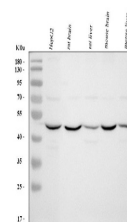
### ABAT Antibody (orb381021)

<b>Description</b>	ABAT Antibody
<b>Species/Host</b>	Rabbit
<b>Reactivity</b>	Human, Mouse, Rat
<b>Conjugation</b>	Unconjugated
<b>Tested Applications</b>	FC, ICC, IF, WB
<b>Immunogen</b>	E. coli-derived human ABAT recombinant protein (Position: K388-K500). Human ABAT shares 93.9% and 94.5% amino acid (aa) sequence identity with mouse and rat ABAT, respectively.
<b>Form/Appearance</b>	Lyophilized
<b>Concentration</b>	Adding 0.2 ml of distilled water will yield a concentration of 500 µg/ml.
<b>Storage</b>	Store at -20°C for one year from date of receipt. After reconstitution, at 4°C for one month. It can also be aliquotted and stored frozen at -20°C for six months. Avoid repeated freeze-thaw cycles.
<b>Note</b>	For research use only
<b>Application notes</b>	Tested Species: In-house tested species with positive results. Other applications have not been tested. Optimal dilutions should be determined by end users. Add 0.2ml of distilled water will yield a concentration of 500ug/ml.
<b>Isotype</b>	Rabbit IgG
<b>Clonality</b>	Polyclonal
<b>MW</b>	56439 MW
<b>Uniprot ID</b>	<b>P80404</b>
<b>Dilution Range</b>	Western blot, 0.1-0.5µg/ml, Human, Mouse, Rat Immunocytochemistry/Immunofluorescence, 5 µg/ml, Human Flow Cytometry, 1-3 µg/1x10 <sup>6</sup> cells, Human
<b>Expiration Date</b>	12 months from date of receipt.

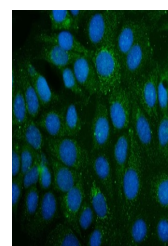


Flow  
Cytometry  
analysis of  
CACO-2 cells

...



WB analysis of  
ABAT using  
anti-ABAT  
anti...



IF analysis of  
ABAT using  
anti-ABAT  
anti...