

Product Datasheet

Cyclin T1/CCNT1 Antibody (orb371724)

Description

Cyclin T1/CCNT1 Antibody

Species/Host

Rabbit

Reactivity

Human, Mouse, Rat

Conjugation

Unconjugated

Tested

FC, ICC, IF, IHC, IHC-Fr, WB

Applications

Immunogen

A synthetic peptide corresponding to a sequence in the middle region of human Cyclin T1 (375-410aa QKQNSKSVPSAKVSLKEYRAKHAEELAAQKRQLENM), different from the related mouse sequence by one amino acid.

Form/Appearance

Lyophilized

Concentration

Adding 0.2 ml of distilled water will yield a concentration of 500 µg/ml.

Storage

Store at -20°C for one year from date of receipt. After reconstitution, at 4°C for one month. It can also be aliquotted and stored frozen at -20°C for six months. Avoid repeated freeze-thaw cycles.

Note

For research use only

Application notes

Tested Species: In-house tested species with positive results. By Heat: Boiling the paraffin sections in 10mM citrate buffer, pH6.0, for 20mins is required for the staining of formalin/paraffin sections. Other applications have not been tested. Optimal dilutions should be determined by end users. Add 0.2ml of distilled water will yield a concentration of 500ug/ml.

Isotype

Rabbit IgG

Clonality

Polyclonal

MW

80685 MW

Uniprot ID

[O60563](#)

Dilution Range

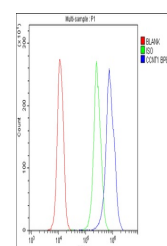
Western blot, 0.1-0.5µg/ml, Human, Mouse, Rat
Immunohistochemistry (Paraffin-embedded Section), 0.5-1µg/ml, Human, Mouse, Rat, By Heat Immunohistochemistry (Frozen Section), 0.5-1µg/ml, Human
Immunocytochemistry/Immunofluorescence, 2µg/ml, Human
Flow Cytometry, 1-3µg/1x10⁶ cells, Human

Expiration Date

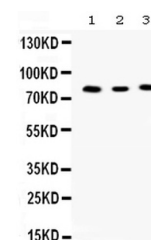
12 months from date of receipt.



Flow Cytometry analysis of U2OS cells us...



Flow Cytometry analysis of U937 cells us...



WB analysis of Cyclin T1 using anti-Cycl...