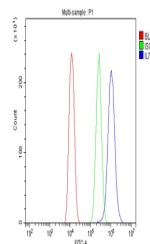


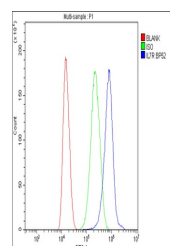
Product Datasheet

IL7R alpha Antibody (orb371682)

Description	IL7R alpha Antibody
Species/Host	Rabbit
Reactivity	Human, Rat
Conjugation	Unconjugated
Tested Applications	FC, WB
Immunogen	A synthetic peptide corresponding to a sequence at the C-terminus of human IL7R alpha (278-315aa DHKKTLEHLCKKPRKNLNVSFNPESFLDCQIHRVDDIQ), different from the related mouse sequence by nine amino acids.
Form/Appearance	Lyophilized
Concentration	Adding 0.2 ml of distilled water will yield a concentration of 500 µg/ml.
Storage	Store at -20°C for one year from date of receipt. After reconstitution, at 4°C for one month. It can also be aliquotted and stored frozen at -20°C for six months. Avoid repeated freeze-thaw cycles.
Note	For research use only
Application notes	Tested Species: In-house tested species with positive results. Other applications have not been tested. Optimal dilutions should be determined by end users. . Add 0.2ml of distilled water will yield a concentration of 500ug/ml.
Isotype	Rabbit IgG
Clonality	Polyclonal
MW	51581 MW
Uniprot ID	P16871
Dilution Range	Western blot, 0.1-0.5µg/ml, Human, Rat Flow Cytometry, 1-3µg/1x10 ⁶ cells, Human
Expiration Date	12 months from date of receipt.



Flow Cytometry analysis of U2OS cells us...



Flow Cytometry analysis of U87 cells us...



WB analysis of IL7R alpha using anti-IL7...