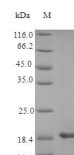


Product Datasheet

Human LIF protein (Active) (orb359146)

| | |
|--------------------------|---|
| Description | Recombinant human LIF active protein |
| Endotoxins | Less than 1.0 EU/μg as determined by LAL method. |
| Preservatives | Lyophilized from a 0.2 μm filtered PBS, pH 7.4 |
| Form/Appearance | Lyophilized powder |
| Storage | The shelf life is related to many factors, storage state, buffer ingredients, storage temperature and the stability of the protein itself. Generally, the shelf life of liquid form is 6 months at -20°C/-80°C. The shelf life of lyophilized form is 12 months at -20°C/-80°C. |
| Tag | Tag-Free |
| Note | For research use only |
| Application notes | We recommend that this vial be briefly centrifuged prior to opening to bring the contents to the bottom. Please reconstitute protein in deionized sterile water to a concentration of 0.1-1.0 mg/mL. We recommend to add 5-50% of glycerol (final concentration) and aliquot for long-term storage at -20°C/-80°C. Our default final concentration of glycerol is 50%. Customers could use it as reference. |
| Protein Sequence | SPLPITPVNATCAIRHPCHNNLMNQIRSQLAQLNGSANALFILYYTAQGEFPNNL DKLCGPNVTDFPPFHANGTEKAKLVELYRIVVYLGTS LGNITRDQKILNPSALS LH SKLNATADILRGLLSNVLCRLCSKYHVGHV DVTYGPDTSGKDV FQKKKLGCQLL GKYKQIIAVLAQAF |
| Purity | > 98% as determined by SDS-PAGE and HPLC. |
| Source | E.Coli |
| MW | 19.7 kDa |
| Uniprot ID | P15018 |
| Expiration Date | 6 months from date of receipt. |



SDS-PAGE
analysis of
Human LIF
protein (...)

