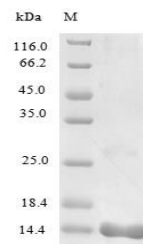


Product Datasheet

Human CCL25 protein (Active) (orb359082)

Description	Recombinant human CCL25 active protein
Endotoxins	Less than 1.0 EU/μg as determined by LAL method.
Preservatives	Lyophilized from a 0.2 μm filtered PBS, pH 7.4
Form/Appearance	Lyophilized powder
Storage	The shelf life is related to many factors, storage state, buffer ingredients, storage temperature and the stability of the protein itself. Generally, the shelf life of liquid form is 6 months at -20°C/-80°C. The shelf life of lyophilized form is 12 months at -20°C/-80°C.
Tag	Tag-Free
Note	For research use only
Application notes	We recommend that this vial be briefly centrifuged prior to opening to bring the contents to the bottom. Please reconstitute protein in deionized sterile water to a concentration of 0.1-1.0 mg/mL. We recommend to add 5-50% of glycerol (final concentration) and aliquot for long-term storage at -20°C/-80°C. Our default final concentration of glycerol is 50%. Customers could use it as reference.
Protein Sequence	M+QGVFEDCCLAYHYPIGWAVLRRRAWTYRIQEVSGSCNLPAAIFYLPKRHRKVC GNPKSREVQRAMKLLDARNKVF AKLHHNTQTFQAGPHAVKKLSSGNSKLSSSK FSNPISSSKRNVSLLISANSGL
Purity	> 97% as determined by SDS-PAGE and HPLC.
Source	E.Coli
MW	14.3 kDa
Uniprot ID	O15444
Expiration Date	6 months from date of receipt.



SDS-PAGE
analysis of
Human
CCL25
protein...

