

## Product Datasheet

**Rabbit IgG (H&L) antibody (ATTO 647N) [Out of stock] (orb347698)**

## Description

Rabbit IgG (H&L) antibody (ATTO 647N)

1 2 No Primary Control 1 2 No Primary Control

### Species/Host

Goat

### Reactivity

Rabbit

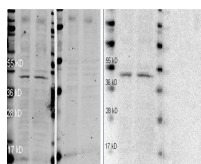
### Conjugation

ATTO-647N

### Tested

DOT, FLISA, IF, WB

### Applications



Western blot analysis of Hela (Lane 1) a...

### Immunogen

Rabbit IgG whole molecule

### Preservatives

0.01% (w/v) Sodium Azide

### Form/Appearance

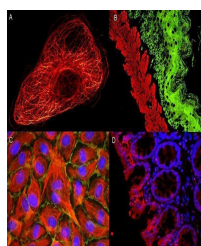
Lyophilized

### Concentration

1.0 mg/mL

### Storage

Store vial at 4° C prior to restoration. For extended storage aliquot contents and freeze at -20° C or below. Avoid cycles of freezing and thawing. Centrifuge product if not completely clear after standing at room temperature. This product is stable for several weeks at 4° C as an undiluted liquid. Dilute only prior to immediate use.



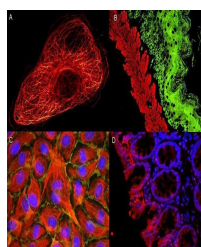
Immunofluorescence analysis of human umb...

### Note

For research use only

### Application notes

Anti-Rabbit IgG (H&L) conjugated to ATTO 647N has been tested by dot blot and western blot and is designed for STED microscopy, FRET, immunofluorescence microscopy, fluorescence based plate assays (FLISA) and fluorescent western blotting. This product is also suitable for multiplex analysis, including multicolor imaging, utilizing various commercial platforms. The emission spectra for this ATTO conjugate matches the principle output wavelengths of most common fluorescence instrumentation.



Immunofluorescence analysis of human umb...

### Isotype

IgG

### Clonality

Polyclonal

### Purity

Rabbit IgG (H&L) Antibody ATTO 647N was prepared from monospecific antiserum by immunoaffinity chromatography using Rabbit IgG coupled to agarose beads followed by solid phase adsorption(s) to remove any unwanted reactivities. Assay by immunoelectrophoresis resulted in a single precipitin arc against anti-Goat Serum, Rabbit IgG and Rabbit Serum. No reaction was