

Product Datasheet

Rabbit IgG (H&L) antibody (ATTO 550) [Out of stock] (orb347694)

Description

Rabbit IgG (H&L) antibody (ATTO 550)



Species/Host

Goat

Reactivity

Rabbit

Conjugation

ATTO-550

Tested

DOT, FLISA, IF, WB

Applications

Immunofluorescence
analysis of rat
kidne...

Immunogen

Rabbit IgG whole molecule

Preservatives

0.01% (w/v) Sodium Azide

Form/Appearance

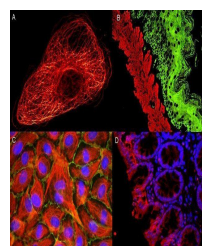
Lyophilized

Concentration

1.0 mg/mL

Storage

Store vial at 4° C prior to restoration. For extended storage aliquot contents and freeze at -20° C or below. Avoid cycles of freezing and thawing. Centrifuge product if not completely clear after standing at room temperature. This product is stable for several weeks at 4° C as an undiluted liquid. Dilute only prior to immediate use.



Immunofluorescence
analysis of human
umb...

Note

For research use only

Application notes

Anti-Rabbit IgG (H&L) conjugated to ATTO 550 has been tested by dot blot and western blot and is designed for STED microscopy, FRET, immunofluorescence microscopy, fluorescence based plate assays (FLISA) and fluorescent western blotting. This product is also suitable for multiplex analysis, including multicolor imaging, utilizing various commercial platforms. The emission spectra for this ATTO conjugate matches the principle output wavelengths of most common fluorescence instrumentation.

Isotype

IgG

Clonality

Polyclonal

Purity

Rabbit IgG (H&L) Antibody ATTO 550 was prepared from monospecific antiserum by immunoaffinity chromatography using Rabbit IgG coupled to agarose beads followed by solid phase adsorption(s) to remove any unwanted reactivities. Assay by immunoelectrophoresis resulted in a single precipitin arc against anti-Goat Serum, Rabbit IgG and Rabbit Serum. No reaction was