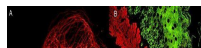


## Product Datasheet

**Mouse IgG (gamma 1, 2a, 2b and 3 chain) antibody  
(ATTO 647N) [Out of stock] (orb347582)**

**Description**

Mouse IgG (gamma 1, 2a, 2b and 3


**Species/Host**

Rabbit

**Reactivity**

Mouse

**Conjugation**

ATTO-647N

**Tested**

DOT, FLISA, IF, WB

**Applications**

Immunofluorescence  
analysis of human  
umb...

**Immunogen**

highly purified mouse IgG gamma 1,  
gamma 2a, gamma 2b and gamma 3  
proteins

**Preservatives**

0.01% (w/v) Sodium Azide

**Form/Appearance**

Lyophilized

**Concentration**

1.0 mg/mL

**Storage**

Store vial at 4° C prior to restoration. For  
extended storage aliquot contents and  
freeze at -20° C or below. Avoid cycles of  
freezing and thawing. Centrifuge product  
if not completely clear after standing at  
room temperature. This product is stable  
for several weeks at 4° C as an undiluted  
liquid. Dilute only prior to immediate use.

**Note**

For research use only

**Application notes**

Anti-Mouse IgG (gamma 1, 2a, 2b and 3  
chain) conjugated to ATTO 647N has  
been tested by dot blot and western blot  
and is designed for STED microscopy,  
FRET, immunofluorescence microscopy,  
fluorescence based plate assays (FLISA)  
and fluorescent western blotting. This  
product is also suitable for multiplex  
analysis, including multicolor imaging,  
utilizing various commercial platforms.  
The emission spectra for this ATTO  
conjugate matches the principle output  
wavelengths of most common  
fluorescence instrumentation.

**Isotype**

IgG

**Clonality**

Polyclonal

**Purity**

Mouse IgG (gamma 1, 2a, 2b and 3  
chain) Antibody ATTO 647N was  
prepared from monospecific antiserum  
by immunoaffinity chromatography using

Biorbyt Ltd.

7 Signet Court, Swann's Road, Cambridge, CB5 8LA, United Kingdom

Email: [info@biorbyt.com](mailto:info@biorbyt.com) | Phone: +44 (0) 1223 859-353 | Fax: +44 (0)1223 280  
240

Biorbyt LLC.

68 TW Alexander Drive<br>Research Triangle Park<br>Durham, North  
Carolina<br>27709, United States

Email: [info@biorbyt.com](mailto:info@biorbyt.com) | Phone: +1 (415) 906-5211 | Fax: +1 (415) 651-8558

proteins and is suitable to screen IgG  
class hybridoma clones. Minimal cross