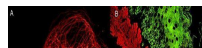


Product Datasheet

**Mouse IgG (gamma 1, 2a, 2b and 3 chain) antibody
(ATTO 488) [Out of stock] (orb347570)**

Description

Mouse IgG (gamma 1, 2a, 2b and 3


Species/Host

Rabbit

Reactivity

Mouse

Conjugation

ATTO-488

Tested

FLISA, IF, WB

Applications

Immunofluorescence
analysis of human
umb...

Immunogen

highly purified mouse IgG gamma 1,
gamma 2a, gamma 2b and gamma 3
proteins

Preservatives

0.01% (w/v) Sodium Azide

Form/Appearance

Lyophilized

Concentration

1.0 mg/mL

Storage

Store vial at 4° C prior to restoration. For
extended storage aliquot contents and
freeze at -20° C or below. Avoid cycles of
freezing and thawing. Centrifuge product
if not completely clear after standing at
room temperature. This product is stable
for several weeks at 4° C as an undiluted
liquid. Dilute only prior to immediate use.

Note

For research use only

Application notes

Anti-Mouse IgG (gamma 1, 2a, 2b and 3
chain) conjugated to ATTO 488 has been
tested by western blot and is designed
for STED microscopy, FRET,
immunofluorescence microscopy,
fluorescence based plate assays (FLISA)
and fluorescent western blotting. This
product is also suitable for multiplex
analysis, including multicolor imaging,
utilizing various commercial platforms.
The emission spectra for this ATTO
conjugate matches the principle output
wavelengths of most common
fluorescence instrumentation.

Isotype

IgG

Clonality

Polyclonal

Purity

Mouse IgG (gamma 1, 2a, 2b and 3
chain) Antibody ATTO 488 was prepared
from monospecific antiserum by
immunoaffinity chromatography using

Biorbyt Ltd.

7 Signet Court, Swann's Road, Cambridge, CB5 8LA, United Kingdom

Email: info@biorbyt.com | Phone: +44 (0) 1223 859-353 | Fax: +44 (0)1223 280
240

Biorbyt LLC.

68 TW Alexander Drive
Research Triangle Park
Durham, North
Carolina
27709, United States

Email: info@biorbyt.com | Phone: +1 (415) 906-5211 | Fax: +1 (415) 651-8558

proteins and is suitable to screen IgG
class hybridoma clones. Minimal cross