

## Product Datasheet

**Goat IgG (H&L) antibody (ATTO 550) [Out of stock]  
(orb347008)**

**Description**

Goat IgG (H&amp;L) antibody (ATTO 550)

**Species/Host**

Rabbit

**Reactivity**

Goat

**Conjugation**

ATTO-550

**Tested**

FLISA, IF, WB

**Applications**
**Immunogen**

Goat IgG whole molecule

**Preservatives**

0.01% (w/v) Sodium Azide

**Form/Appearance**

Lyophilized

**Concentration**

1.0 mg/mL

**Storage**

Store vial at 4° C prior to restoration. For extended storage aliquot contents and freeze at -20° C or below. Avoid cycles of freezing and thawing. Centrifuge product if not completely clear after standing at room temperature. This product is stable for several weeks at 4° C as an undiluted liquid. Dilute only prior to immediate use.

**Note**

For research use only

**Application notes**

Anti-Goat IgG (H&L) conjugated by ATTO 550 has been tested by Western blot and is designed for STED microscopy, FRET, immunofluorescence microscopy, fluorescence based plate assays (FLISA) and fluorescent western blotting. This product is also suitable for multiplex analysis, including multicolor imaging, utilizing various commercial platforms. The emission spectra for this ATTO conjugate matches the principle output wavelengths of most common fluorescence instrumentation.

**Isotype**

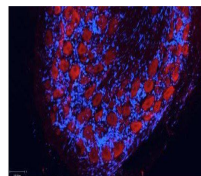
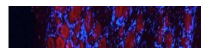
IgG

**Clonality**

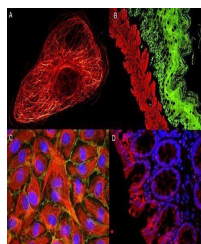
Polyclonal

**Purity**

Goat IgG (H&L) conjugated by ATTO 550 was prepared from monospecific antiserum by immunoaffinity chromatography using Goat IgG coupled to agarose beads followed by solid phase adsorption(s) to remove any unwanted reactivities. Assay by immunoelectrophoresis resulted in a single precipitin arc against anti-Rabbit Serum, Goat IgG and Goat Serum. No reaction was



Immunofluorescence analysis of rat kidney...



Immunofluorescence analysis of human umb...