

## Product Datasheet

### Human Albumin Conjugated protein (Biotin) (orb346260)

## Description

Human Albumin Conjugated protein conjugated to

### Conjugation

Biotin

### Tested

DOT

### Applications

### Preservatives

0.01% (w/v) Sodium Azide

### Form/Appearance

Lyophilized

### Concentration

1.0 mg/ml

### Storage

Store vial at 4° C prior to restoration. For extended storage aliquot contents and freeze at -20° C or below. Avoid cycles of freezing and thawing. Centrifuge product if not completely clear after standing at room temperature. This product is stable for several weeks at 4° C as an undiluted liquid. Dilute only prior to immediate use.

### Note

For research use only

### Application notes

Human Albumin biotin conjugated has been tested in dot blot and can be used in SDS, Western Blotting, ELISA experiments and other immunological assays.

### Isotype

Albumin

### Purity

This product was prepared from normal serum delipidation a multi-stage process including selective precipitation. Assay by immunoelectrophoresis resulted in a single precipitin arc against anti-biotin, anti-Human Albumin and anti-Human Serum.

### Source

Human

### Uniprot ID

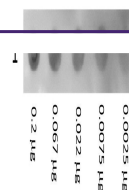
[P02768](#)

### NCBI

[AAA98797.1](#)

### Expiration Date

6 months from date of receipt.



Dot Blot  
analysis of  
Human  
Albumin  
tissu...