

## Product Datasheet

### ATM (phospho-S1981) antibody (orb345897)

**Description**

ATM (phospho-S1981) antibody

**Species/Host**

Sheep

**Reactivity**

Human

**Conjugation**

Unconjugated

**Tested**

ELISA, WB

**Applications**
**Immunogen**

This antibody was affinity purified from whole sheep serum prepared by repeated immunizations with a synthetic peptide corresponding to a region near serine 1981 of human ATM conjugated to KLH using maleimide.

**Preservatives**

0.01% (w/v) Sodium Azide

**Form/Appearance**

Liquid (sterile filtered)

**Concentration**

1.0 mg/mL

**Storage**

Store vial at -20° C or below prior to opening. This vial contains a relatively low volume of reagent (25 µL). To minimize loss of volume dilute 1:10 by adding 225 µL of the buffer stated above directly to the vial. Recap, mix thoroughly and briefly centrifuge to collect the volume at the bottom of the vial. Use this intermediate dilution when calculating final dilutions as recommended below. Store the vial at -20°C or below after dilution. Avoid cycles of freezing and thawing.

**Note**

For research use only

**Application notes**

Affinity purified sheep anti-ATM has been tested by ELISA and western blotting against native form phosphorylated ATM PK.

**Isotype**

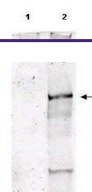
IgG

**Clonality**

Polyclonal

**Purity**

This affinity-purified antibody is directed against human ATM and is useful in determining its presence in various assays. This polyclonal anti-ATM antibody recognizes the phosphorylated epitope in native and over-expressed proteins found in various tissues and extracts. Reactivity is observed against human ATM. Cross reactivity with ATM from other mammalian sources has not been tested.

**Uniprot ID**
**Q13315**
**NCBI**
**NP\_000042.3**


Western blot analysis of untreated MCF-7...