

## Product Datasheet

### KLH antibody (Biotin) (orb345884)

## Description

KLH antibody (Biotin)

### Species/Host

Rabbit

### Reactivity

Mollusc

### Conjugation

Biotin

### Tested

ELISA, IHC, WB

### Applications

### Immunogen

KLH (Keyhole Limpet Hemocyanin)

### Preservatives

0.01% (w/v) Sodium Azide

### Form/Appearance

Lyophilized

### Concentration

1.0 mg/mL

### Storage

Store vial at 4° C prior to restoration. For extended storage aliquot contents and freeze at -20° C or below. Avoid cycles of freezing and thawing. Centrifuge product if not completely clear after standing at room temperature. This product is stable for several weeks at 4° C as an undiluted liquid. Dilute only prior to immediate use.

### Note

For research use only

### Application notes

Anti-KLH Biotin conjugated Antibody has been tested by western blotting to detect a single band of the expected apparent molecular weight and for ELISA. Anti-KLH antibody biotin conjugate is suitable for use with streptavidin reporter systems. Researchers should determine optimal titers for applications that are not stated below.

### Isotype

IgG

### Clonality

Polyclonal

### Purity

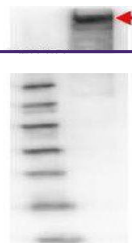
Anti-KLH Antibody biotin conjugate was prepared from monospecific antiserum by immunoaffinity chromatography using KLH coupled to agarose beads followed by solid phase adsorption(s) to remove any unwanted reactivities. Assay by immunoelectrophoresis resulted in a single precipitin arc against anti-Rabbit Serum, anti-Biotin, and KLH.

### Dilution Range

ELISA: 1:250,000, IHC: User Optimized, WB: 1:5,000 - 1:25,000

### Expiration Date

12 months from date of receipt.



Western blot analysis of KLH reduced (La...