

Product Datasheet

GFP antibody (Biotin) (orb345877)

Description

GFP antibody (Biotin)

Species/Host

Rabbit

Reactivity

Other

Conjugation

Biotin

Tested

ELISA, IF, IHC, WB

Applications

Immunogen

Anti-Green Fluorescent Protein (GFP) is produced by immunizing GFP containing fusion protein that corresponds to the full length amino acid sequence (246aa) derived from the jellyfish *Aequorea victoria*.

Preservatives

0.01% (w/v) Sodium Azide

Form/Appearance

Lyophilized

Concentration

1.0 mg/mL

Storage

Store Anti-GFP at 4° C prior to restoration. For extended storage aliquot contents and freeze at -20° C or below. Avoid cycles of freezing and thawing. Centrifuge product if not completely clear after standing at room temperature. This product is stable for several weeks at 4° C as an undiluted liquid. Dilute only prior to immediate use.

Note

For research use only

Application notes

Biotin Conjugated GFP Antibody has been tested by ELISA and western blot and is suitable for immunoblotting, ELISA, immunohistochemistry, immunomicroscopy as well as other antibody based assays using streptavidin or avidin conjugates requiring lot-to-lot consistency.

Isotype

IgG

Clonality

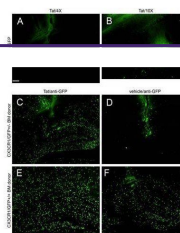
Polyclonal

Purity

Anti-GFP was prepared from monospecific antiserum by immunoaffinity chromatography using Green Fluorescent Protein (*Aequorea victoria*) coupled to agarose beads followed by solid phase adsorption(s) to remove any unwanted reactivities. Assay by immunoelectrophoresis resulted in a single precipitin arc against anti-Rabbit Serum, anti-Biotin and purified and partially purified Green Fluorescent Protein (*Aequorea victoria*). No reaction was observed against Human, Mouse and Rat Serum Proteins.

Uniprot ID

[P42212](#)



Immunofluorescence analysis of Biotin Mo...



Western blot analysis of Lane 1: 50ng of...