
Product Datasheet

Histone H3 K27 methyl antibody (orb345826)

Description

Histone H3 K27 methyl antibody

Species/Host

Rabbit

Reactivity

Human

Conjugation

Unconjugated

Tested

DOT, WB

Applications
Immunogen

Histone H3 K27 methyl Antibody was prepared from whole rabbit serum produced by repeated immunizations with a synthetic peptide surrounding the K27 me3 site of human Histone H3.

Preservatives

0.01% (w/v) Sodium Azide

Form/Appearance

Liquid (sterile filtered)

Concentration

0.83 mg/ml

Storage

Store vial at -20° C prior to opening. Aliquot contents and freeze at -20° C or below for extended storage. Avoid cycles of freezing and thawing. Centrifuge product if not completely clear after standing at room temperature. This product is stable for several weeks at 4° C as an undiluted liquid. Dilute only prior to immediate use.

Note

For research use only

Application notes

Anti-Histone H3 K27 methyl Antibody is tested by dot blot. This antibody is useful for ELISA and Western Blot. Specific conditions for reactivity should be optimized by the end user. Expect a band approximately ~15.4kDa corresponding to the appropriate cell lysate or extract.

Isotype

IgG

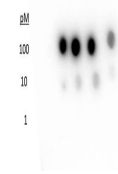
Clonality

Polyclonal

Purity

Histone H3 K27 methyl Antibody was prepared from monospecific antiserum by immunoaffinity chromatography. This antibody recognizes the Me1, Me2 and Me3 of Lys27 for human Histone H3. A BLAST analysis was used to suggest cross-reactivity with Human, mouse, rat, and C. elegans based on 100% sequence homology. Cross-reactivity with Histone H3 [methyl Lys27] from other sources has not been determined.

Uniprot ID
[Q71DI3](#)
NCBI
[NP_001005464.1](#)

 pM
100
10
1


Dot Blot of Rabbit Histone H3 K27 me1-3 ...