

Product Datasheet

Beta Amyloid pyro E11 antibody (orb345739)

Description

Beta Amyloid pyro E11 antibody

Species/Host

Rabbit

Reactivity

Human, Primate

Conjugation

Unconjugated

Tested

ELISA, IF, IHC, WB

Applications

Immunogen

beta Amyloid [Pyro Glu11] affinity purified antibody was prepared from whole rabbit serum produced by repeated immunizations with a synthetic peptide corresponding to the N-terminus 11-pyro E start point of human beta Amyloid.

Preservatives

None

Form/Appearance

Liquid (sterile filtered)

Concentration

0.75mg/mL

Storage

Store vial at -20° C prior to opening. Aliquot contents and freeze at -20° C or below for extended storage. Avoid cycles of freezing and thawing. Centrifuge product if not completely clear after standing at room temperature. This product is stable for several weeks at 4° C as an undiluted liquid. Dilute only prior to immediate use.

Note

For research use only

Application notes

Anti-Beta Amyloid pyro Glu11 antibody has been tested by western blot and is useful for ELISA, Western Blot and Immunostaining. Specific conditions for reactivity should be optimized by the end user. Expect a band approximately ~86.9kDa corresponding to the appropriate cell lysate or extract.

Isotype

IgG

Clonality

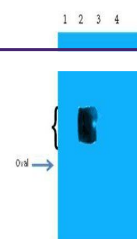
Polyclonal

Purity

Anti-Beta Amyloid pyro Glu11 was affinity purified from monospecific antiserum by immunoaffinity chromatography. This antibody is specific to the N-terminus 11-pyro E start point. A BLAST analysis was used to suggest cross-reactivity with Human and Primate based on 100% sequence homology. Cross-reactivity with beta Amyloid pyro Glu11 from other sources has not been determined.

Uniprot ID

P05067



Western blot analysis of Ovalbumin Contr...