

Product Datasheet

Muscle Glycogen Synthase (phospho-S641) antibody (orb345666)

Description

Muscle Glycogen Synthase (phospho-S641)



Species/Host

Rabbit

Reactivity

Human, Mouse

Conjugation

Unconjugated

Tested

ELISA, IHC, WB

Applications

Immunohistochemical staining of Human Pr...

Immunogen

Human Muscle Glycogen Synthase phospho peptide corresponding to a region of the human protein conjugated to Keyhole Limpet Hemocyanin (KLH).

Preservatives

None

Form/Appearance

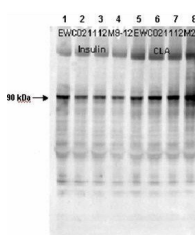
Liquid (sterile filtered)

Concentration

1.0mg/mL

Storage

Store Phospho GSY1 antibody at -20° C or below prior to opening. This vial contains a relatively low volume of reagent (25 µL). To minimize loss of volume dilute 1:10 by adding 225 µL of the buffer stated above directly to the vial. Recap, mix thoroughly and briefly centrifuge to collect the volume at the bottom of the vial. Use this intermediate dilution when calculating final dilutions as recommended below. Store the vial at -20°C or below after dilution. Avoid cycles of freezing and thawing.



Western blot analysis of human muscle ti...

Note

For research use only

Application notes

This phospho specific polyclonal antibody was tested by immunohistochemistry, immunoblotting, and ELISA. By ELISA the antibody was found to be reactive with the phosphorylated form of the immunizing peptide and minimally reactive with the non-phosphorylated form of the immunizing peptide. Immunoblotting will detect human and mouse muscle glycogen synthase. Although not tested, this antibody is likely functional in immunoprecipitation.

Isotype

IgG

Clonality

Polyclonal

Purity

Phospho Glycogen Synthase pS641 antibody is directed against human muscle glycogen

Biorbyt Ltd.

7 Signet Court, Swann's Road, Cambridge, CB5 8LA, United Kingdom

Email: info@biorbyt.com | Phone: +44 (0) 1223 859-353 | Fax: +44 (0)1223 280 240

Biorbyt LLC.

68 TW Alexander Drive
Research Triangle Park
Durham, North Carolina
27709, United States

Email: info@biorbyt.com | Phone: +1 (415) 906-5211 | Fax: +1 (415) 651-8558

antibody purified antibody was then cross adsorbed against the non-phosphorylated