

Product Datasheet

pRb2 p130 antibody (orb345652)

Description

pRb2 p130 antibody

Species/Host

Rabbit

Reactivity

Human

Conjugation

Unconjugated

Tested

ELISA, IP, WB

Applications

Immunogen

This affinity purified antibody was prepared by repeated immunizations with a synthetic peptide corresponding to the Spa310 sequence of pRb2/p130 protein. A residue of cysteine was added to facilitate coupling.

Preservatives

0.1% (w/v) Sodium Azide

Form/Appearance

Liquid (sterile filtered)

Concentration

1.39 mg/mL

Storage

Store vial at -20° C or below prior to opening. This vial contains a relatively low volume of reagent (25 µL). To minimize loss of volume dilute 1:10 by adding 225 µL of the buffer stated above directly to the vial. Recap, mix thoroughly and briefly centrifuge to collect the volume at the bottom of the vial. Use this intermediate dilution when calculating final dilutions as recommended below. Store the vial at -20°C or below after dilution. Avoid cycles of freezing and thawing.

Note

For research use only

Application notes

This affinity purified antibody is tested for ELISA and western blotting. Specific conditions for reactivity should be optimized by the end user. Expect a band approximately 130 kDa in size corresponding to pRb2/p130, and a band approximately 4.2kDa in size corresponding to Spa310 peptide (latter not shown), by western blotting in the appropriate cell lysate or extract.

Isotype

IgG

Clonality

Polyclonal

Purity

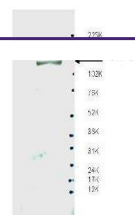
This antiserum is directed against Spa310 and reacts with the Spa310 domain of pRb2/p130 from human tissues. Based on the sequence we expect this antibody to react as well Spa310 from chimpanzee and orangutan, and with lesser affinity, Spa310 from horse, dog, bovine, rat and opossum.

Uniprot ID

[Q08999](#)

NCBI

[Q08999.3](#)



Western blot analysis of whole LNCaP cel...