

## Product Datasheet

### pRb2 p130 antibody (orb345651)

## Description

pRb2 p130 antibody

## Species/Host

Rabbit

## Reactivity

Human

## Conjugation

Unconjugated

## Tested

ELISA, IP, WB

## Applications

## Immunogen

This affinity purified antibody was prepared by repeated immunizations with a synthetic peptide corresponding to the Spa310 sequence of pRb2/p130 protein. A residue of cysteine was added to facilitate coupling.

## Preservatives

0.1% (w/v) Sodium Azide

## Form/Appearance

Liquid (sterile filtered)

## Concentration

1.39 mg/mL

## Storage

Store vial at -20° C prior to opening. Aliquot contents and freeze at -20° C or below for extended storage. Avoid cycles of freezing and thawing. Centrifuge product if not completely clear after standing at room temperature. This product is stable for several weeks at 4° C as an undiluted liquid. Dilute only prior to immediate use.

## Note

For research use only

## Application notes

This affinity purified antibody is tested for ELISA and western blotting. Specific conditions for reactivity should be optimized by the end user. Expect a band approximately 130 kDa in size corresponding to pRb2/p130, and a band approximately 4.2kDa in size corresponding to Spa310 peptide (latter not shown), by western blotting in the appropriate cell lysate or extract.

## Isotype

IgG

## Clonality

Polyclonal

## Purity

This antiserum is directed against Spa310 and reacts with the Spa310 domain of pRb2/p130 from human tissues. Based on the sequence we expect this antibody to react as well Spa310 from chimpanzee and orangutan, and with lesser affinity, Spa310 from horse, dog, bovine, rat and opossum.

## Uniprot ID

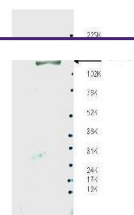
[Q08999](#)

## NCBI

[Q08999.3](#)

## Dilution Range

ELISA: 1:75,000 - 1:100,000, IP: 1:100, WB: 1:500 -



Western blot analysis of whole LNCaP cel...