

Product Datasheet

THRA antibody (orb345598)

Description

THRA antibody

Species/Host

Rabbit

Reactivity

Human

Conjugation

Unconjugated

Tested

ELISA, IF, IHC, IP, WB

Applications

Immunogen

This affinity purified antibody was prepared from whole rabbit serum produced by repeated immunizations with a synthetic peptide corresponding to a region near the amino terminus of human THRA isoform 1 protein.

Preservatives

0.01% (w/v) Sodium Azide

Form/Appearance

Liquid (sterile filtered)

Concentration

0.89 mg/mL

Storage

Store vial at -20° C or below prior to opening. This vial contains a relatively low volume of reagent (25 µL). To minimize loss of volume dilute 1:10 by adding 225 µL of the buffer stated above directly to the vial. Recap, mix thoroughly and briefly centrifuge to collect the volume at the bottom of the vial. Use this intermediate dilution when calculating final dilutions as recommended below. Store the vial at -20°C or below after dilution. Avoid cycles of freezing and thawing.

Note

For research use only

Application notes

This affinity purified antibody has been tested for use in ELISA and western blotting.

Isotype

IgG

Clonality

Polyclonal

Purity

This product was affinity purified from monospecific antiserum by immunoaffinity chromatography. This antibody reacts with human THRA protein and recognizes THRA isoform 1. A BLAST analysis was used to suggest cross-reactivity with THRA from mouse, human and rat based on a 100% homology with the immunizing sequence. Cross-reactivity with THRA from other sources and isoforms may occur but has not been determined.

Uniprot ID

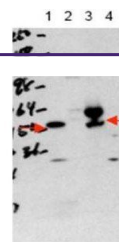
P10827

NCBI

40806160

Dilution Range

ELISA: 1:300,000, IHC: 1:200, IF: 1:200, IP: 1:100, WB: 1:500 - 1:2,000



Western blot analysis of (lane 1) and TH...