

## Product Datasheet

### THRA antibody (orb345597)

## Description

THRA antibody

### Species/Host

Rabbit

### Reactivity

Human

### Conjugation

Unconjugated

### Tested

ELISA, IF, IHC, IP, WB

### Applications

### Immunogen

This affinity purified antibody was prepared from whole rabbit serum produced by repeated immunizations with a synthetic peptide corresponding to a region near the amino terminus of human THRA isoform 1 protein.

### Preservatives

0.01% (w/v) Sodium Azide

### Form/Appearance

Liquid (sterile filtered)

### Concentration

1.0mg/mL

### Storage

Store vial at -20° C prior to opening. Aliquot contents and freeze at -20° C or below for extended storage. Avoid cycles of freezing and thawing. Centrifuge product if not completely clear after standing at room temperature. This product is stable for several weeks at 4° C as an undiluted liquid. Dilute only prior to immediate use.

### Note

For research use only

### Application notes

This affinity purified antibody has been tested for use in ELISA and western blotting.

### Isotype

IgG

### Clonality

Polyclonal

### Purity

This product was affinity purified from monospecific antiserum by immunoaffinity chromatography. This antibody reacts with human THRA protein. A BLAST analysis was used to suggest cross-reactivity with THRA from mouse, human and rat based on a 100% homology with the immunizing sequence. Cross-reactivity with THRA from other sources has not been determined.

### Uniprot ID

**P10827**

### NCBI

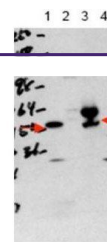
**40806160**

### Dilution Range

ELISA: 1:300,000, IHC: 1:200, IF: 1:200, IP: 1:100, WB: 1:500 - 1:2,000

### Expiration Date

12 months from date of receipt.



Western blot analysis of recombinant THRA...