

Product Datasheet

ASPP1 antibody (orb345587)

Description

ASPP1 antibody

Species/Host

Rabbit

Reactivity

Human

Conjugation

Unconjugated

Tested

ELISA, WB

Applications

Immunogen

This affinity purified antibody was prepared from whole rabbit serum produced by repeated immunizations with a synthetic peptide corresponding to an internal sequence of human ASPP1.

Preservatives

0.01% (w/v) Sodium Azide

Form/Appearance

Liquid (sterile filtered)

Concentration

0.33 mg/mL

Storage

Store vial at -20° C prior to opening. Aliquot contents and freeze at -20° C or below for extended storage. Avoid cycles of freezing and thawing. Centrifuge product if not completely clear after standing at room temperature. This product is stable for several weeks at 4° C as an undiluted liquid. Dilute only prior to immediate use.

Note

For research use only

Application notes

This affinity purified antibody has been tested for use in ELISA and western blotting. Specific conditions for reactivity should be optimized by the end user. Expect a band approximately 120 kDa in size corresponding to ASPP1 by western blotting in the appropriate cell lysate or extract.

Isotype

IgG

Clonality

Polyclonal

Purity

This affinity purified antibody is directed against human ASPP1. The product was affinity purified from monospecific antiserum by immunoaffinity chromatography. Minimal reactivity occurs against ASPP2. A BLAST analysis was used to suggest cross-reactivity with ASPP1 from mouse based on a 92% homology with the immunizing sequence. Reactivity against homologues from other sources is not known.

Uniprot ID

[Q96KQ4](#)

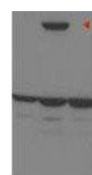
NCBI

[NP_056131.2](#)

Dilution Range

ELISA: 1:2,500 - 1:10,000, WB: 1:500 - 1:3,000

1 2 3



Western blot analysis of MCF-7 cells (la...