

## Product Datasheet

### iASSP antibody (orb345545)

## Description

iASSP antibody

### Species/Host

Rabbit

### Reactivity

Human

### Conjugation

Unconjugated

### Tested

ELISA, IHC, WB

### Applications

### Immunogen

This affinity purified antibody was prepared from whole rabbit serum produced by repeated immunizations with a synthetic peptide corresponding to an internal region near amino acids 775-800 of human iASPP (isoform 1) protein.

### Preservatives

0.01% (w/v) Sodium Azide

### Form/Appearance

Liquid (sterile filtered)

### Concentration

1.0 mg/mL

### Storage

Store vial at -20° C or below prior to opening. This vial contains a relatively low volume of reagent (25 µL). To minimize loss of volume dilute 1:10 by adding 225 µL of the buffer stated above directly to the vial. Recap, mix thoroughly and briefly centrifuge to collect the volume at the bottom of the vial. Use this intermediate dilution when calculating final dilutions as recommended below. Store the vial at -20°C or below after dilution. Avoid cycles of freezing and thawing.

### Note

For research use only

### Application notes

This affinity purified antibody has been tested for use in ELISA, immunohistochemistry and by western blot. Specific conditions for reactivity should be optimized by the end user. Expect bands approximately 100 kDa and 50 kDa in size corresponding to isoforms 1 and 2 respectively of iASPP protein by western blotting in the appropriate cell lysate or extract.

### Isotype

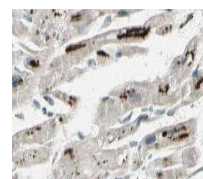
IgG

### Clonality

Polyclonal

### Purity

This affinity-purified antibody is directed against the human iASPP protein. The product was affinity purified from monospecific antiserum by immunoaffinity purification. A BLAST analysis was used to suggest cross reactivity with iASPP proteins from human, dog and mouse sources. Expect reactivity against both isoform 1 and isoform 2. Partial reactivity may occur against iASPP from bovine. Reactivity against



Immunohistochemical staining of human he...



Western blot analysis of MCF7 whole cell...

Biorbyt Ltd.

7 Signet Court, Swann's Road, Cambridge, CB5 8LA, United Kingdom

Email: [info@biorbyt.com](mailto:info@biorbyt.com) | Phone: +44 (0) 1223 859-353 | Fax: +44 (0)1223 280 240

Biorbyt LLC.

68 TW Alexander Drive<br>Research Triangle Park<br>Durham, North Carolina<br>27709. United States

Email: [info@biorbyt.com](mailto:info@biorbyt.com) | Phone: +1 (415) 906-5211 | Fax: +1 (415) 651-8558

### Dilution Range

ELISA: 1:40,000 - 1:160,000, IHC: 1:1,000 - 1:5,000, WB: 1:1,000 - 1:5,000