

Product Datasheet

SMAD3 antibody (orb345538)

Description

SMAD3 antibody

Species/Host

Rabbit

Reactivity

Human, Mouse

Conjugation

Unconjugated

Tested

ELISA, IHC, WB

Applications

Immunogen

This affinity purified antibody was prepared from whole rabbit serum produced by repeated immunizations with a synthetic peptide corresponding to the C-terminal domain of human SMAD3 protein.

Preservatives

0.01% (w/v) Sodium Azide

Form/Appearance

Liquid (sterile filtered)

Concentration

1.2 mg/ml

Storage

Store Anti-SMAD3 at -20° C prior to opening. Aliquot contents and freeze at -20° C or below for extended storage. Avoid cycles of freezing and thawing. Centrifuge product if not completely clear after standing at room temperature. This product is stable for several weeks at 4° C as an undiluted liquid. Dilute only prior to immediate use.

Note

For research use only

Application notes

This affinity purified antibody has been tested for use in ELISA, immunohistochemistry and by western blot. Specific conditions for reactivity should be optimized by the end user. Expect a band approximately 48 kDa in size corresponding to Smad3 protein by western blotting in the appropriate stimulated tissue or cell lysate or extract. This reagent reacts equally to phosphorylated and non-phosphorylated Smad3 by ELISA and western blotting.

Isotype

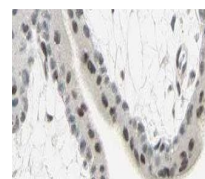
IgG

Clonality

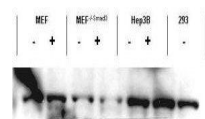
Polyclonal

Purity

SMAD3 affinity-purified antibody is directed against human Smad3 protein. The product was affinity purified from monospecific antiserum by immunoaffinity purification. A BLAST analysis was used to suggest reactivity with this protein from human, mouse, rat, swine, and chicken sources based on 100% homology for the immunogen sequence. ELISA and western blot show equivalent reactivity against phosphorylated and non-phosphorylated human SMAD3.



Immunohistochemical staining of tumor ce...



Western blot analysis of unstimulated an...