

## Product Datasheet

### BORIS antibody (orb345528)

## Description

BORIS antibody

### Species/Host

Rabbit

### Reactivity

Human

### Conjugation

Unconjugated

### Tested

ELISA, WB

### Applications

### Immunogen

This affinity purified antibody was prepared from whole rabbit serum produced by repeated immunizations with a synthetic peptide corresponding to N-Terminal region near aa 1-30 of human BORIS protein.

### Preservatives

0.01% (w/v) Sodium Azide

### Form/Appearance

Liquid (sterile filtered)

### Concentration

1.28 mg/mL

### Storage

Store BORIS Antibody at -20° C prior to opening. Aliquot contents and freeze at -20° C or below for extended storage. Avoid cycles of freezing and thawing. Centrifuge product if not completely clear after standing at room temperature. This product is stable for several weeks at 4° C as an undiluted liquid. Dilute only prior to immediate use.

### Note

For research use only

### Application notes

BORIS affinity purified antibody has been tested for use in ELISA and by western blot. Specific conditions for reactivity should be optimized by the end user. Expect a predominant band approximately 75 kDa in size corresponding to BORIS by western blotting in the appropriate cell lysate or extract.

### Isotype

IgG

### Clonality

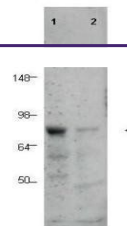
Polyclonal

### Purity

This affinity-purified antibody is directed against the human BORIS protein. The product was affinity purified from monospecific antiserum by immunoaffinity purification. A BLAST analysis was used to suggest cross reactivity with BORIS proteins from human and chimpanzee. Partial reactivity may occur against BORIS from mouse, dog and rat sources based on varying degrees of homology to the immunizing sequence. Reactivity against homologues from other sources is not known.

### Uniprot ID

[Q8NI51](#)



Western blot analysis of human tissue ly...