

Product Datasheet

Mre11 antibody (orb345522)

Description

Mre11 antibody

Species/Host

Rabbit

Reactivity

Mouse

Conjugation

Unconjugated

Tested

ELISA, WB

Applications

Immunogen

This affinity purified antibody was prepared from whole rabbit serum produced by repeated immunizations with a recombinant protein corresponding to amino acids 68-706 of mouse Mre11 protein.

Preservatives

0.01% (w/v) Sodium Azide

Form/Appearance

Liquid (sterile filtered)

Concentration

1.05 mg/mL

Storage

Store vial at -20° C prior to opening. Aliquot contents and freeze at -20° C or below for extended storage. Avoid cycles of freezing and thawing. Centrifuge product if not completely clear after standing at room temperature. This product is stable for several weeks at 4° C as an undiluted liquid. Dilute only prior to immediate use.

Note

For research use only

Application notes

This affinity purified antibody has been tested for use in ELISA and western blot. Specific conditions for reactivity should be optimized by the end user. Expect a band approximately 80 kDa in size corresponding to Mre11 by western blotting in the appropriate cell lysate or extract.

Isotype

IgG

Clonality

Polyclonal

Purity

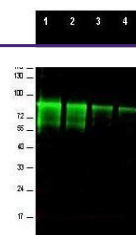
This affinity purified antibody is directed against mouse Mre11 protein. The product was affinity purified from monospecific antiserum by immunoaffinity purification. A BLAST analysis was used to suggest cross reactivity with Mre11 protein from rat (94% homology). Based on protein sequence homology also expect partial reactivity against Mre11 homologues from macaque (88%), human (84%) and dog (82%). This sequence shows less than 75% homology to homologues from bovine, Xenopus, chicken, chimpanzee and zebrafish sources. Reactivity against homologues from other sources is not known.

Uniprot ID

[Q61216](#)

NCBI

[18202590](#)



Western blot analysis of Lanes 1-4 containing...