

Product Datasheet

Mre11 antibody (orb345504)

Description

Mre11 antibody

Species/Host

Rabbit

Reactivity

Yeast

Conjugation

Unconjugated

Tested

ChIP, ELISA, WB

Applications

Immunogen

This affinity purified antibody was prepared from whole rabbit serum produced by repeated immunizations with a synthetic peptide corresponding to an internal region near amino acids 575-600 of *Saccharomyces cerevisiae* (baker's yeast) Mre11 protein.

Preservatives

0.01% (w/v) Sodium Azide

Form/Appearance

Liquid (sterile filtered)

Concentration

1.17 mg/mL

Storage

Store vial at -20° C prior to opening. Aliquot contents and freeze at -20° C or below for extended storage. Avoid cycles of freezing and thawing. Centrifuge product if not completely clear after standing at room temperature. This product is stable for several weeks at 4° C as an undiluted liquid. Dilute only prior to immediate use.

Note

For research use only

Application notes

This affinity purified antibody has been tested for use in ELISA and by ChIP assay. Specific conditions for reactivity should be optimized by the end user.

Isotype

IgG

Clonality

Polyclonal

Purity

This affinity-purified antibody is directed against *Saccharomyces cerevisiae* Mre11 protein. The product was affinity purified from monospecific antiserum by immunoaffinity purification. A BLAST analysis was used to suggest that little cross reactivity should be expected with this protein from other sources.

Uniprot ID

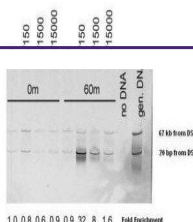
[P32829](#)

NCBI

[6323880](#)

Dilution Range

ELISA: 1:10,000 - 1:50,000, ChIP: User Optimized, WB: 1:500- 1:2,000



Immunoprecipitation analysis of inductio...