

## Product Datasheet

### DELTA-1 antibody (orb345496)

**Description**

DELTA-1 antibody

**Species/Host**

Rabbit

**Reactivity**

Mouse

**Conjugation**

Unconjugated

**Tested**

ELISA, IHC, WB

**Applications**
**Immunogen**

This affinity purified antibody was prepared from whole rabbit serum produced by repeated immunizations with a synthetic peptide corresponding to an internal region near amino acids 150-175 of Mouse DELTA-1. Swiss Prot accession Q61483.

**Preservatives**

0.01% (w/v) Sodium Azide

**Form/Appearance**

Liquid (sterile filtered)

**Concentration**

1.21 mg/mL

**Storage**

Store vial at -20° C prior to opening. Aliquot contents and freeze at -20° C or below for extended storage. Avoid cycles of freezing and thawing. Centrifuge product if not completely clear after standing at room temperature. This product is stable for several weeks at 4° C as an undiluted liquid. Dilute only prior to immediate use.

**Note**

For research use only

**Application notes**

Anti-DELTA-1 Antibody has been tested for use in ELISA against the immunizing peptide, western blot, and in IHC. Reactivity in other immunoassays is unknown.

**Isotype**

IgG

**Clonality**

Polyclonal

**Purity**

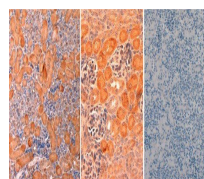
Anti-DELTA-1 Antibody was affinity purified antibody produced by immunoaffinity chromatography using the immunizing peptide after immobilization to a solid phase. The antibody detects DELTA-1 from mouse. Activity against Delta-1 from other species has not been determined but is expected based on sequence homology. Expected to cross-react with rat, human and chicken.

**Uniprot ID**

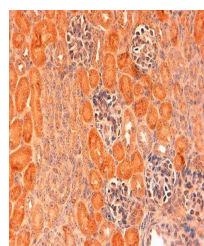
[Q61483](#)

**NCBI**

[NP\\_031891.2](#)



Immunohistochemical staining of Mouse Em...



Immunohistochemical staining of Mouse em...