

## Product Datasheet

### GGA-1 antibody (orb345491)

## Description

GGA-1 antibody

### Species/Host

Rabbit

### Reactivity

Human

### Conjugation

Unconjugated

### Tested

ELISA, IP, WB

### Applications

### Immunogen

This affinity-purified antibody was prepared from whole rabbit serum produced by repeated immunizations with a synthetic peptide corresponding to an internal region near amino acids 330-360 of Human GGA-1.

### Preservatives

0.01% (w/v) Sodium Azide

### Form/Appearance

Liquid (sterile filtered)

### Concentration

1.35 mg/mL

### Storage

Store vial at -20° C prior to opening. Aliquot contents and freeze at -20° C or below for extended storage. Avoid cycles of freezing and thawing. Centrifuge product if not completely clear after standing at room temperature. This product is stable for several weeks at 4° C as an undiluted liquid. Dilute only prior to immediate use.

### Note

For research use only

### Application notes

This affinity purified antibody has been tested for use in ELISA and western blot. Specific conditions for reactivity should be optimized by the end user. Expect bands at 70 kDa in size corresponding to GGA1 by western blotting in the appropriate cell lysate or extract.

### Isotype

IgG

### Clonality

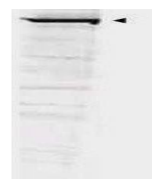
Polyclonal

### Purity

This affinity purified antibody is directed against human GGA1 protein. The product was affinity purified from monospecific antiserum by immunoaffinity purification. A BLAST analysis was used to suggest reactivity with this protein from human based on 100% homology for the immunogen sequence. Cross reactivity may occur with GGA1 from bovine (87% homology), mouse (82% homology) and rat (76% homology) sources. The immunizing sequence is present only in isoform 1 of this protein, therefore cross reactivity with splice variants is not expected. Cross reactivity with GGA1 homologues from other sources has not been determined.

### Uniprot ID

[Q9UJY5](https://www.uniprot.org/entry/Q9UJY5)



Western blot analysis of HEK293 cells ly...