

Product Datasheet

Plk1 (phospho-T210) antibody (orb345425)

Description

Plk1 (phospho-T210) antibody

Species/Host

Rabbit

Reactivity

Human, Mouse

Conjugation

Unconjugated

Tested

ELISA, IHC, WB

Applications
Immunogen

Anti-Polo-like Kinase pT210 Antibody was produced by repeated immunizations with a synthetic phospho peptide corresponding to an internal region near aa 200-225 of Human Polo-like kinase 1 (Plk1) protein.

Preservatives

0.01% (w/v) Sodium Azide

Form/Appearance

Liquid (sterile filtered)

Concentration

1.0 mg/mL

Storage

Store vial at -20° C prior to opening. Aliquot contents and freeze at -20° C or below for extended storage. Avoid cycles of freezing and thawing. Centrifuge product if not completely clear after standing at room temperature. This product is stable for several weeks at 4° C as an undiluted liquid. Dilute only prior to immediate use.

Note

For research use only

Application notes

This affinity-purified antibody has been tested for use in ELISA, IHC, and by western blot. Specific conditions for reactivity should be optimized by the end user. Expect a band approximately 68 kDa in size corresponding to Plk-1 by western blotting in the appropriate cell lysate or extract. This antibody is positive by IHC on kidney, liver, cancer, thyroid and lymphocyte tissue.

Isotype

IgG

Clonality

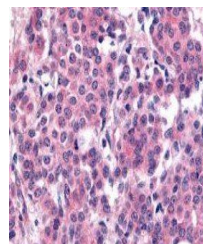
Polyclonal

Purity

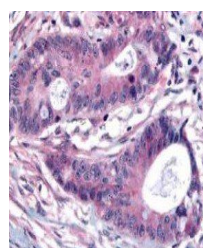
Anti-Polo-like Kinase pT210 Antibody is directed against human phosphorylated Plk1 protein. This antibody was affinity purified. This antibody is specific for phosphorylated human Plk-1 protein at the pT210 residue. BLAST analysis indicates 100 % homology of the immunizing sequence with Plk-1 homologues from human, chimpanzee, pig, chicken, mouse



Western blot analysis of HeLa cell lysat...



Immunohistochemical staining of human br...



Immunohistochemical staining of human co...