

## Product Datasheet

### GSK3 Alpha (phospho-S21) antibody (orb345419)

## Description

GSK3 Alpha (phospho-S21) antibody

### Species/Host

Rabbit

### Reactivity

Human

### Conjugation

Unconjugated

### Tested

ELISA, IF, WB

### Applications

### Immunogen

This affinity purified antibody was prepared from whole rabbit serum produced by repeated immunizations with a synthetic peptide corresponding to the N-Terminal region near aa 1-25 of human GSK3 alpha.

### Preservatives

0.01% (w/v) Sodium Azide

### Form/Appearance

Liquid (sterile filtered)

### Concentration

1.28 mg/mL

### Storage

Store vial at -20° C prior to opening. Aliquot contents and freeze at -20° C or below for extended storage. Avoid cycles of freezing and thawing. Centrifuge product if not completely clear after standing at room temperature. This product is stable for several weeks at 4° C as an undiluted liquid. Dilute only prior to immediate use.

### Note

For research use only

### Application notes

This affinity-purified antibody has been tested for use in ELISA and by western blot. Specific conditions for reactivity should be optimized by the end user. Expect a band approximately 52 kDa in size corresponding to GSK3A by western blotting in the appropriate cell lysate or extract. Less than 1% reactivity is observed against the non-phosphorylated form of the immunizing peptide. This antibody is phospho specific for pS21 of GSK3A.

### Isotype

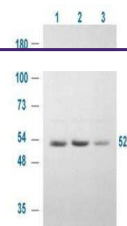
IgG

### Clonality

Polyclonal

### Purity

This affinity-purified antibody is directed against the phosphorylated form of human GSK3A at the pS 21 residue. The product was affinity purified from monospecific antiserum by immunoaffinity purification. Antiserum was first purified against the phosphorylated form of the immunizing peptide. The resultant affinity purified antibody was then cross-adsorbed against the non-phosphorylated form of the immunizing peptide. This phospho



Western blot analysis of human derived 2...