

Product Datasheet

Myosin phospho S19 antibody (orb345406)

Description

Myosin phospho S19 antibody

Species/Host

Rabbit

Reactivity

Human, Mouse

Conjugation

Unconjugated

Tested

ELISA, IHC, IP, WB

Applications
Immunogen

Human Myosin Light Chain phospho peptide corresponding to a region near the amino terminus of the human smooth/non-muscle form of myosin regulatory light chain conjugated to Keyhole Limpet Hemocyanin (KLH).

Preservatives

0.01% (w/v) Sodium Azide

Form/Appearance

Liquid (sterile filtered)

Concentration

1.19 mg/mL

Storage

Store vial at -20° C prior to opening. Aliquot contents and freeze at -20° C or below for extended storage. Avoid cycles of freezing and thawing. Centrifuge product if not completely clear after standing at room temperature. This product is stable for several weeks at 4° C as an undiluted liquid. Dilute only prior to immediate use.

Note

For research use only

Application notes

Rabbit Anti-Myosin pS19/pS20 Antibody was tested by ELISA, immunohistochemistry, and western blotting. Immunoblotting was used to show reactivity with unstimulated and stimulated cardiac myocytes, 3T3 whole cell lysates, and regulatory light chain and smooth muscle phospho recombinant protein. The antibody was also reactive with the phosphorylated form of the immunizing peptide and minimally reactive with the non-phosphorylated form of the immunizing peptide. Although not tested, this antibody is likely functional by immunoprecipitation.

Isotype

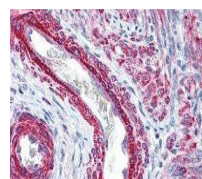
IgG

Clonality

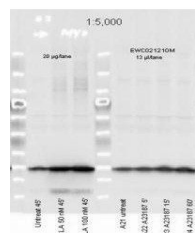
Polyclonal

Purity

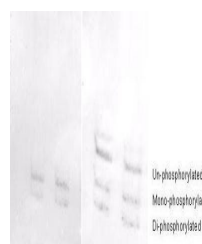
This affinity purified antibody is directed against the regulatory light chain of smooth and non-muscle myosin. The antibody is phosphospecific and detects monophosphorylated and diphosphorylated forms of the protein. The



Immunohistochemical staining of variety ...



Western blot analysis of mouse cardiac m...



Western blot analysis of 3T3 cell lysate...